

Diagram 1
The National Insurance Institute - Resources and Uses

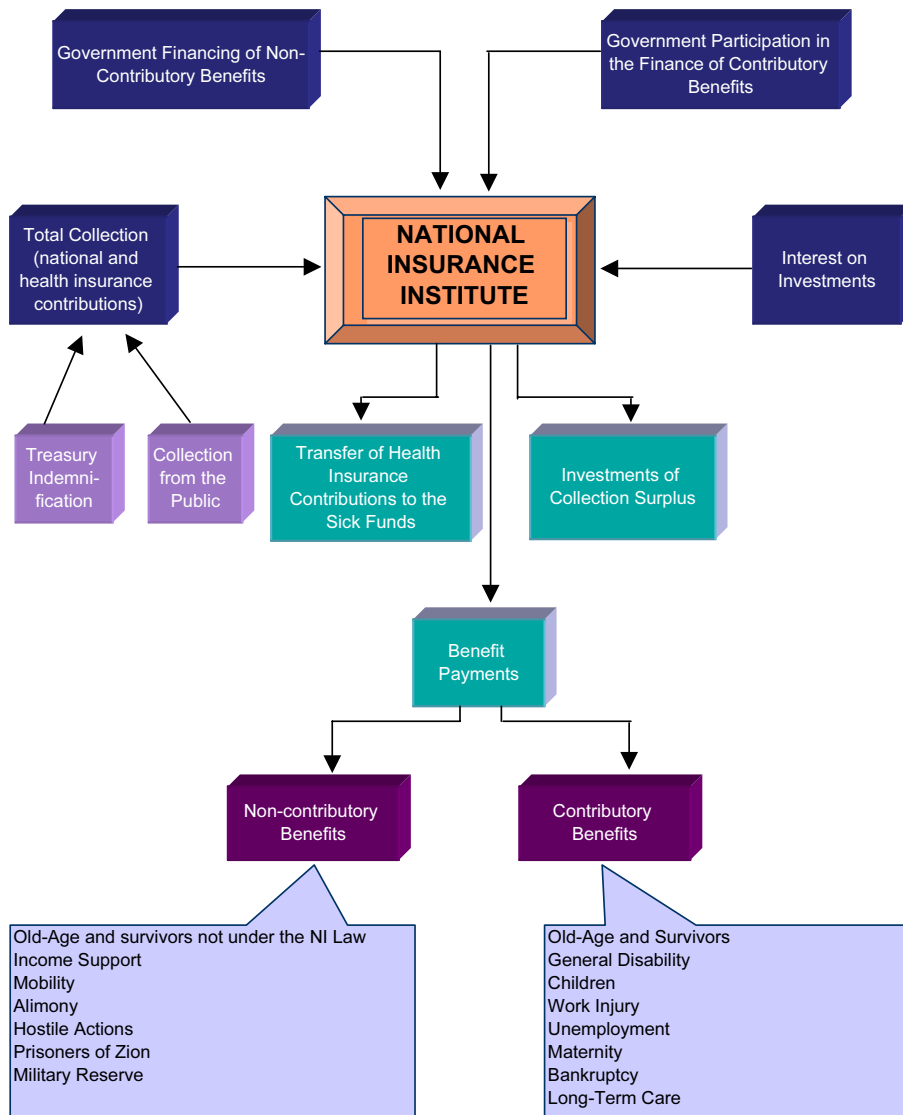


Diagram 2
Benefit Payments by Insurance Branch, 2007

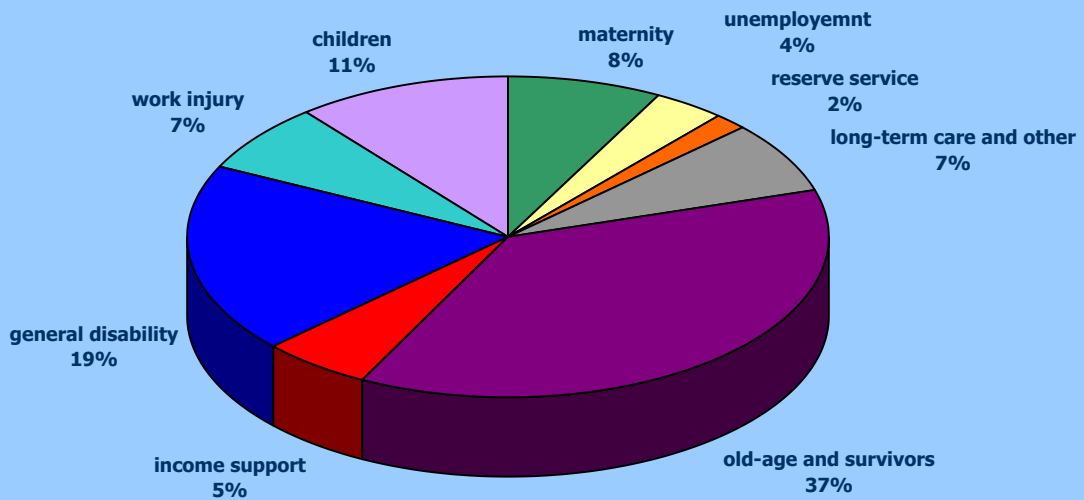
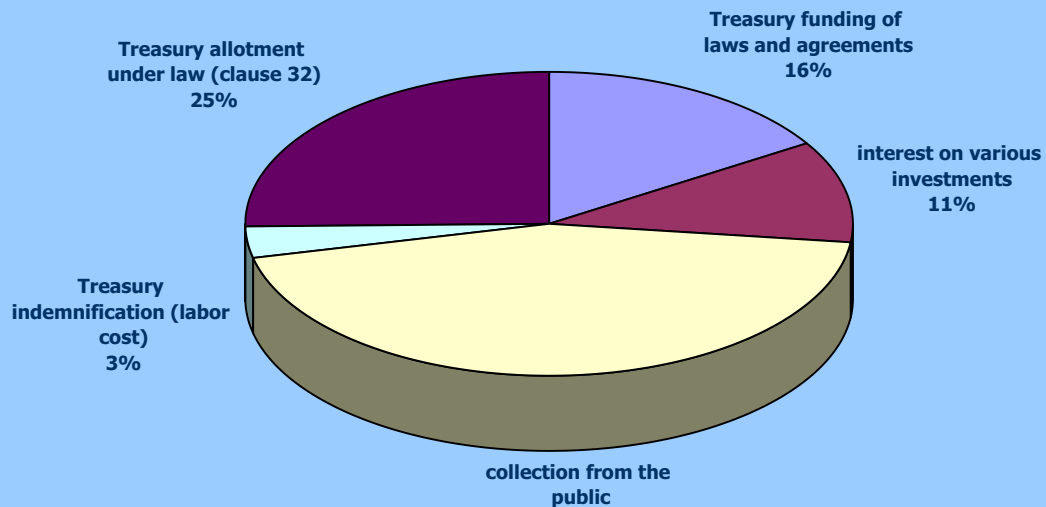


Diagram 3
Receipts of National Insurance Branches by Source of Financing, 2007



The total receipts for national insurance branches amount to about NIS 52.3 billion. About 55.6% of the receipts of the national insurance branches come from independent sources, and about 44.4% from the State budget.

Diagram 4
Benefit Payments as Percentage of GDP, 1980-2007

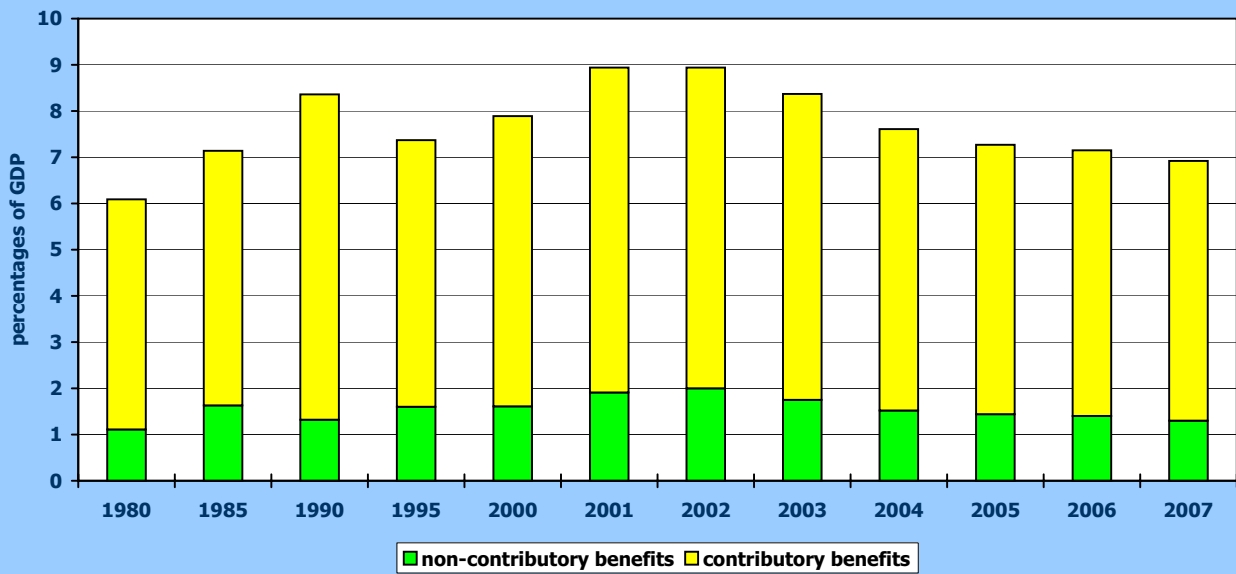


Diagram 5
Collection of Insurance Contributions as Percentage of GDP, 1980-2007

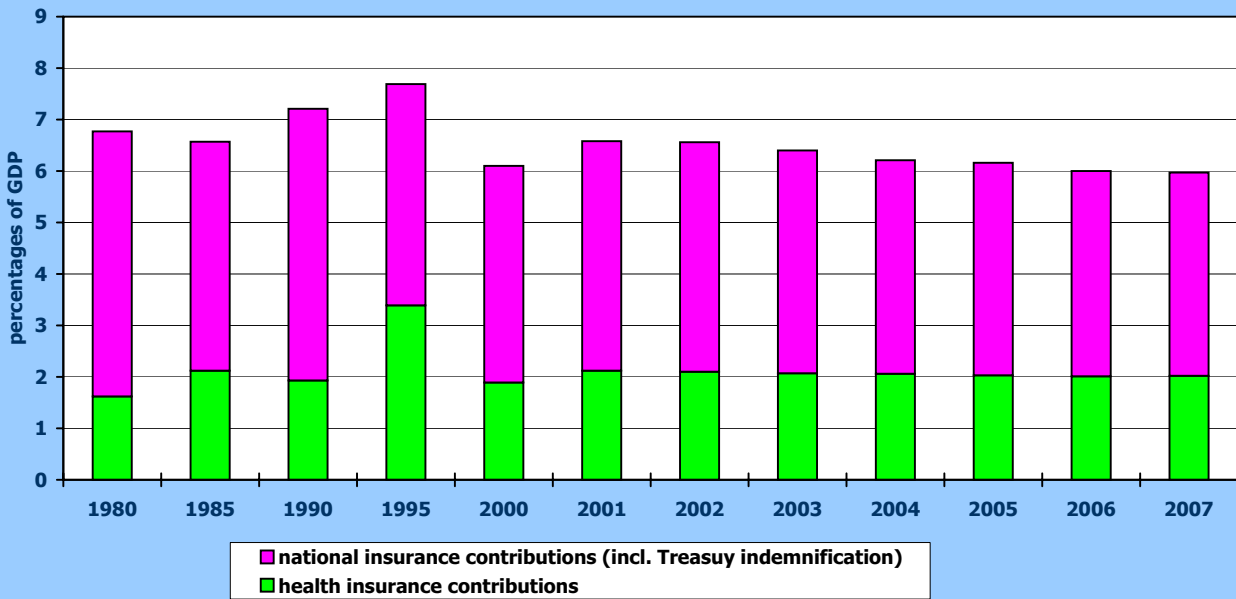
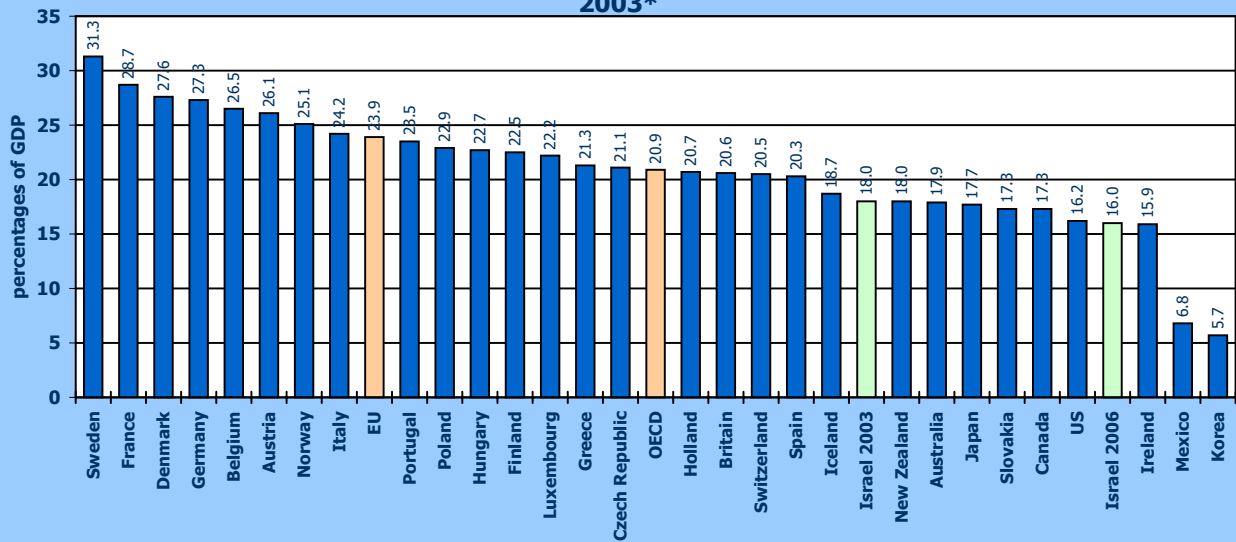
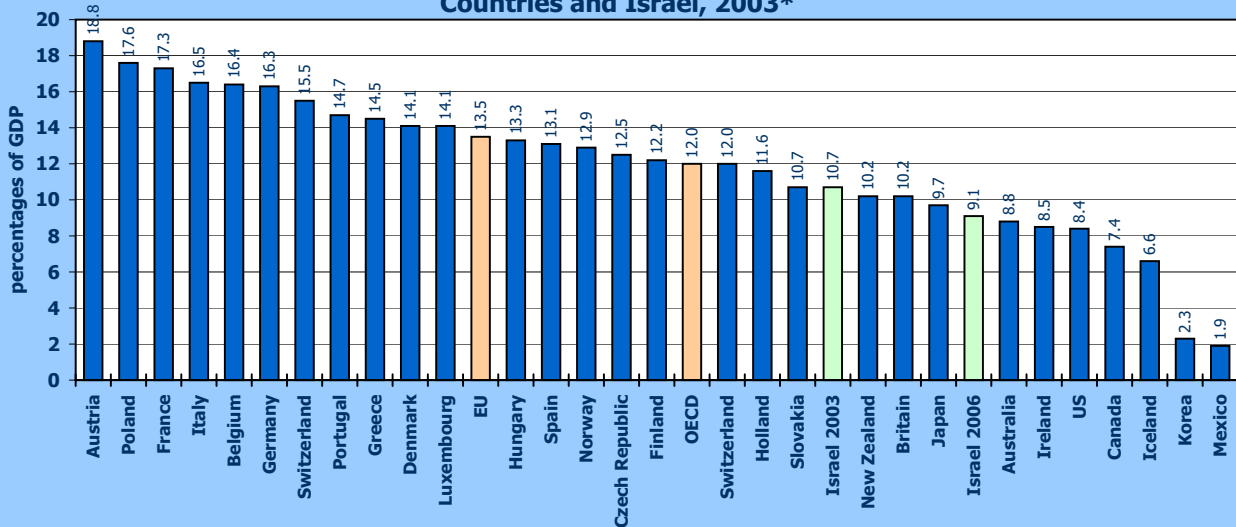


Diagram 6
Public Social Expenditure as Percentage of GDP, OECD Countries and Israel, 2003*



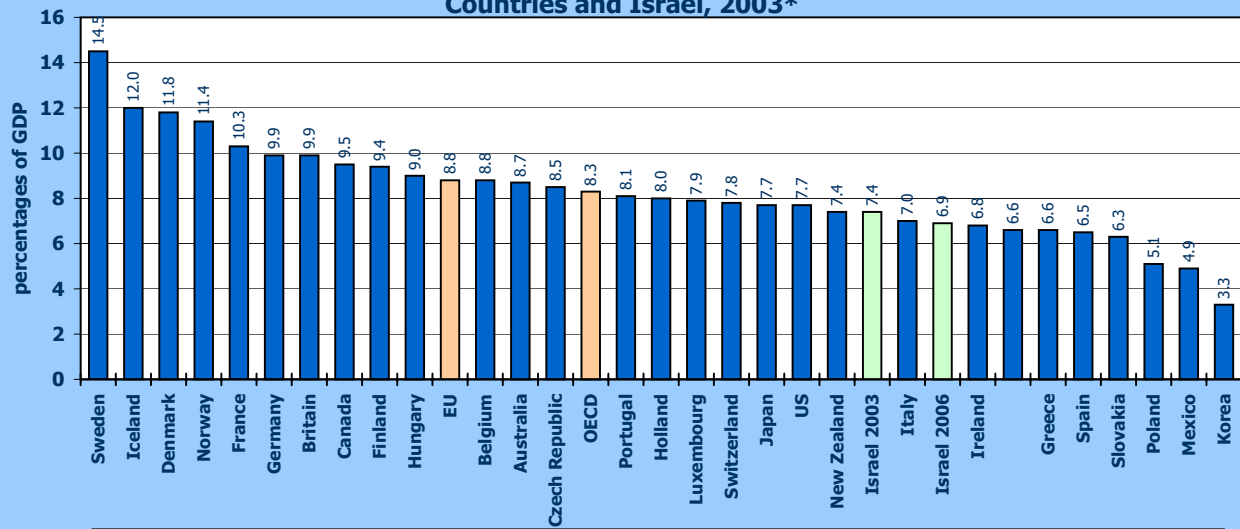
* The source of the international data: OECD; the source of the data for Israel: the National Insurance Institute and the Central Bureau of Statistics

Diagram 7
Public Social Expenditure on Cash Benefits as Percentage of GDP, OECD Countries and Israel, 2003*



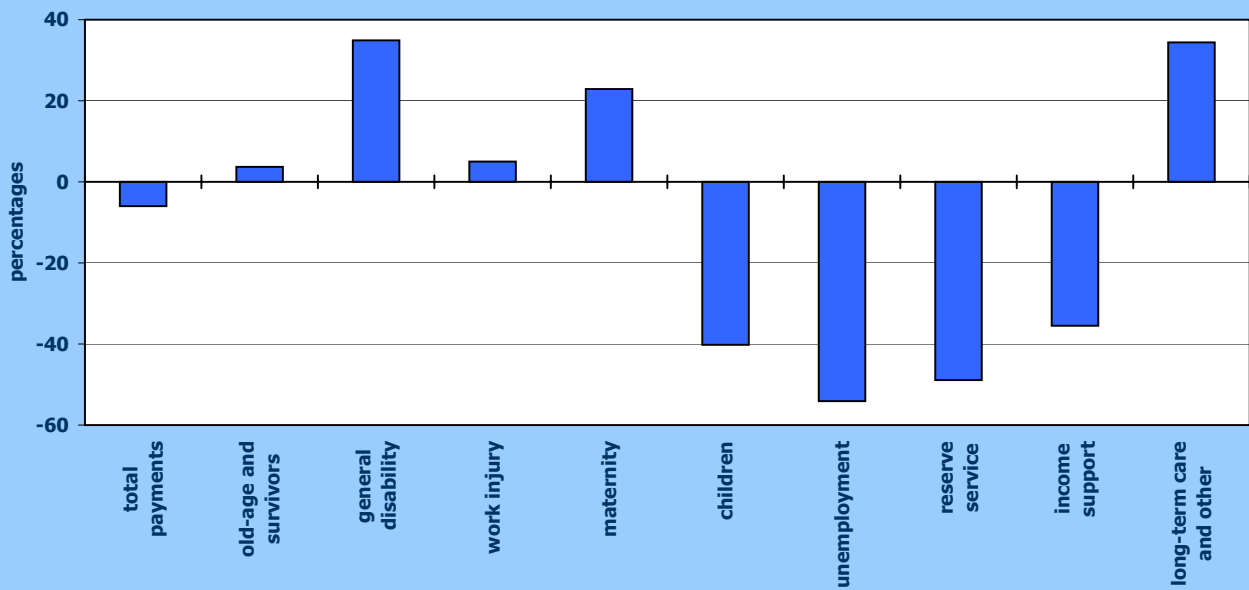
* The source of the international data: OECD; the source of the data for Israel: the National Insurance Institute and the Central Bureau of Statistics

Diagram 8
Public Social Expenditure on in-kind Benefits as Percentage of GDP, OECD Countries and Israel, 2003*



* The source of the international data: OECD; the source of the data for Israel: the National Insurance Institute and the Central Bureau of Statistics

Diagram 9
Rate of Real Cumulative Change in Benefit Payments, 2007 Compared to 2001



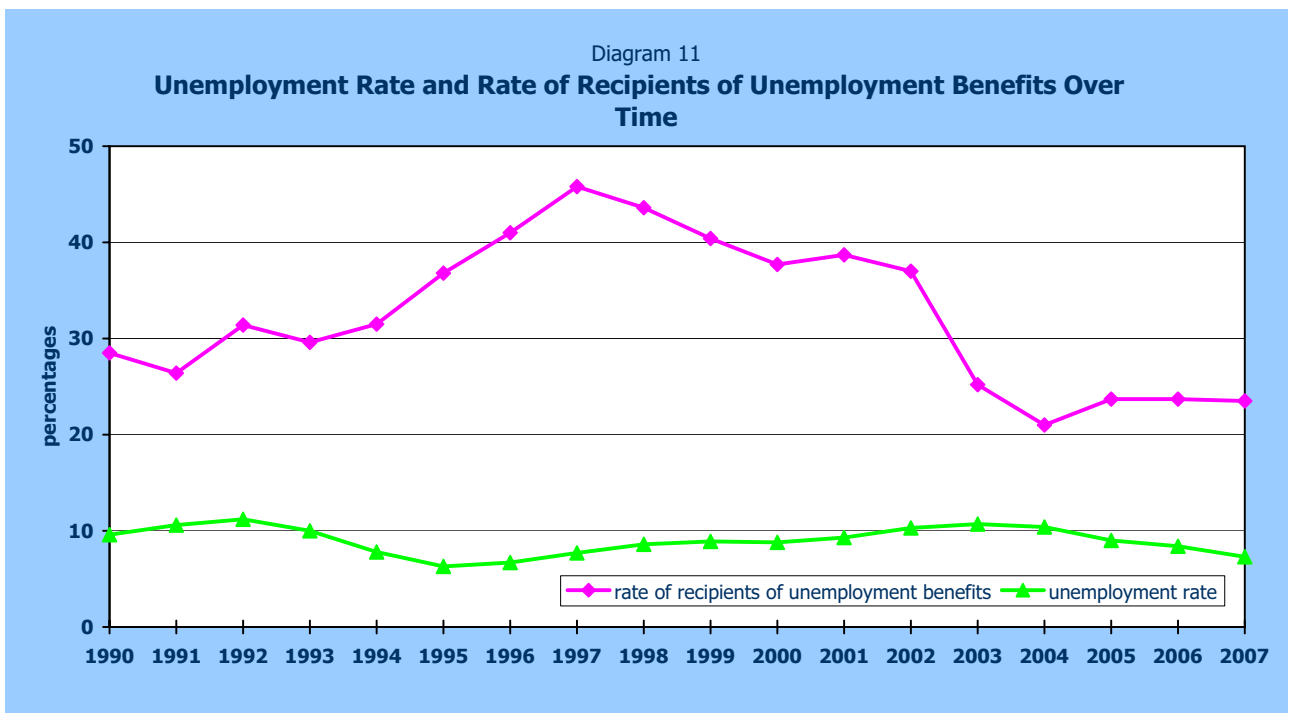
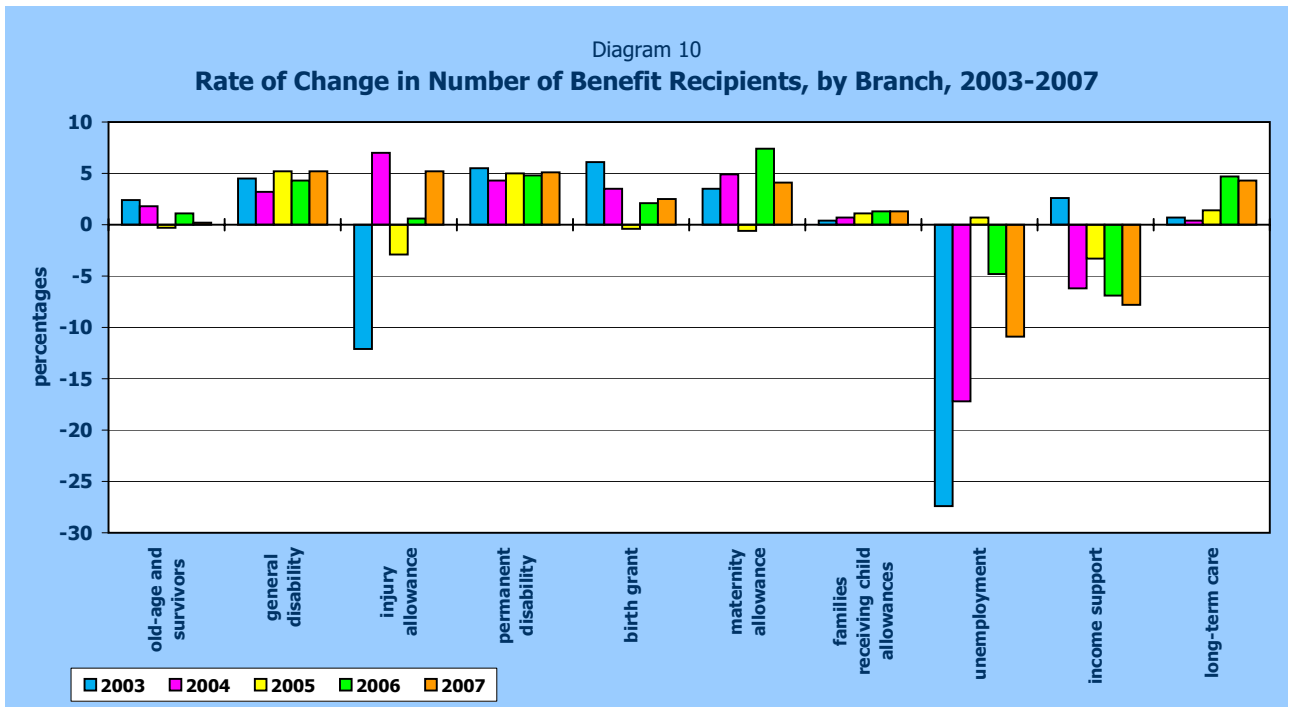


Diagram 12

Poverty in Total Population, Before and After Transfer Payments and Direct Taxes: Families (percentages), 1979-2006 (not including East Jerusalem)

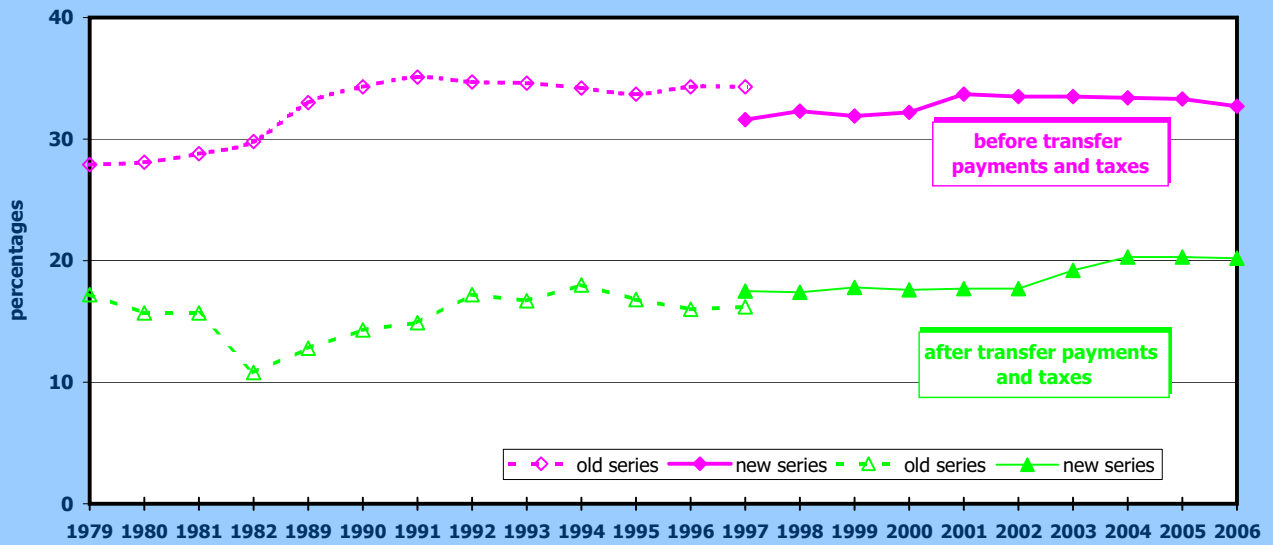
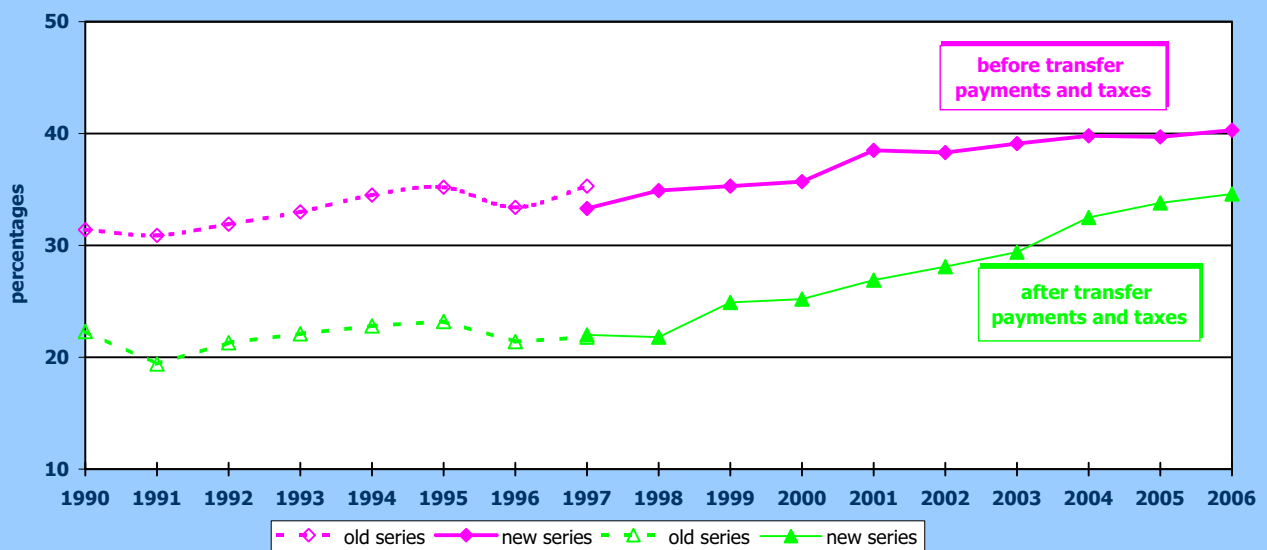


Diagram 13

Poverty Among Children, Before and After Transfer Payments and Taxes (percentages), 1990-2006 (not including East Jerusalem)



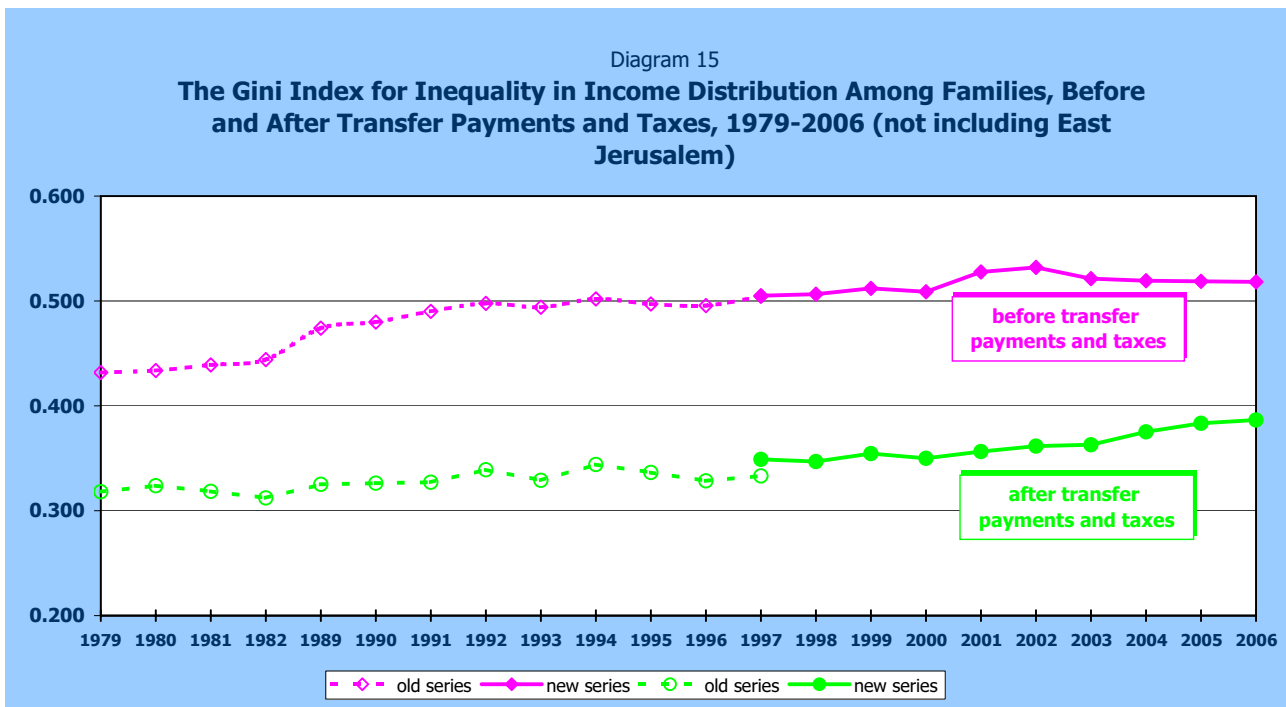
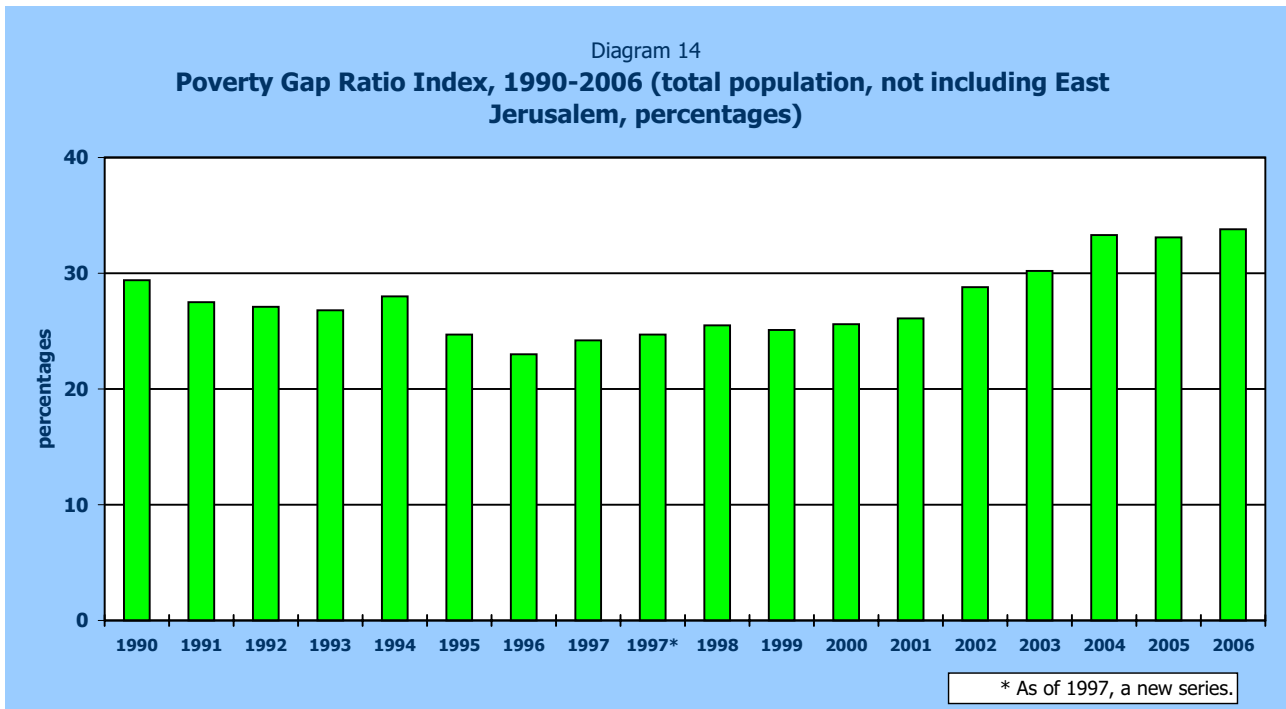


Diagram 16
The Share of Each Decile in Total Transfer Payments and in Total Direct Taxes - Total Population (percentages), 2006

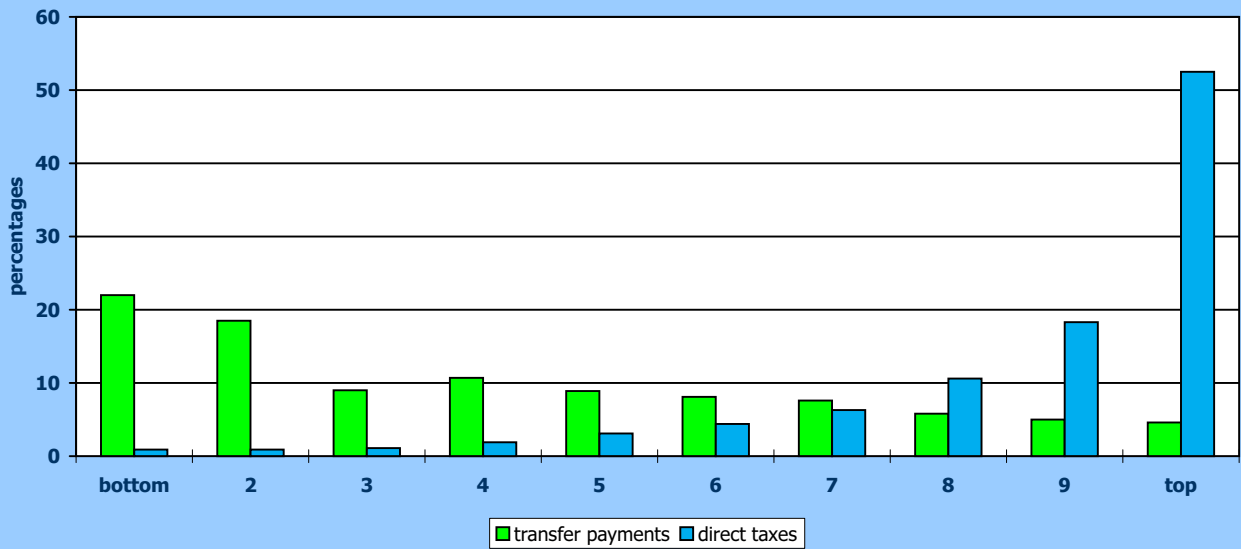


Diagram 17
The Share of Each Decile in Total Net Income (percentages), 2006

