
Selected Diagrams

Diagram 1

The National Insurance Institute - Resources and Uses

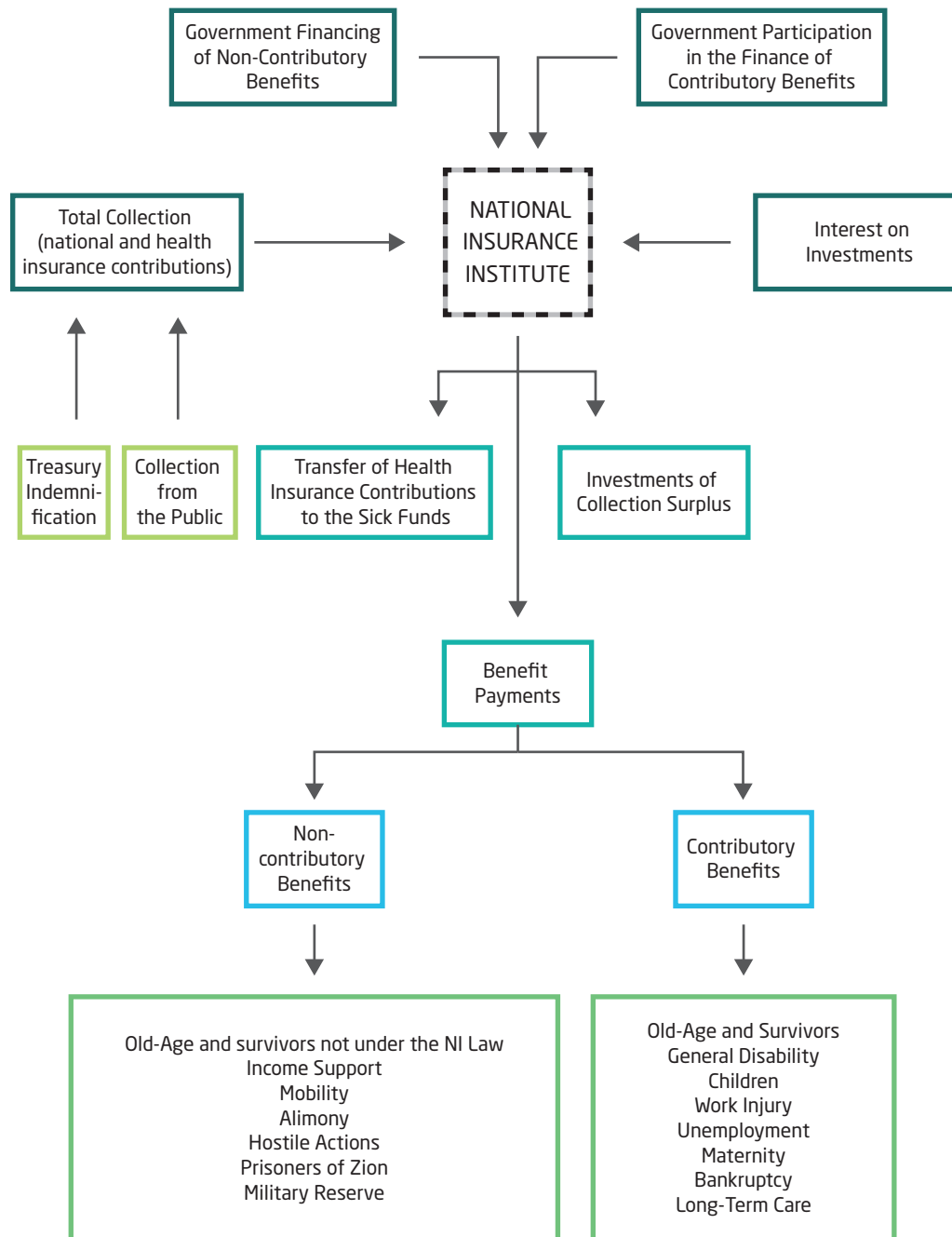


Diagram 2
Benefit Payments by Insurance Branch, 2015

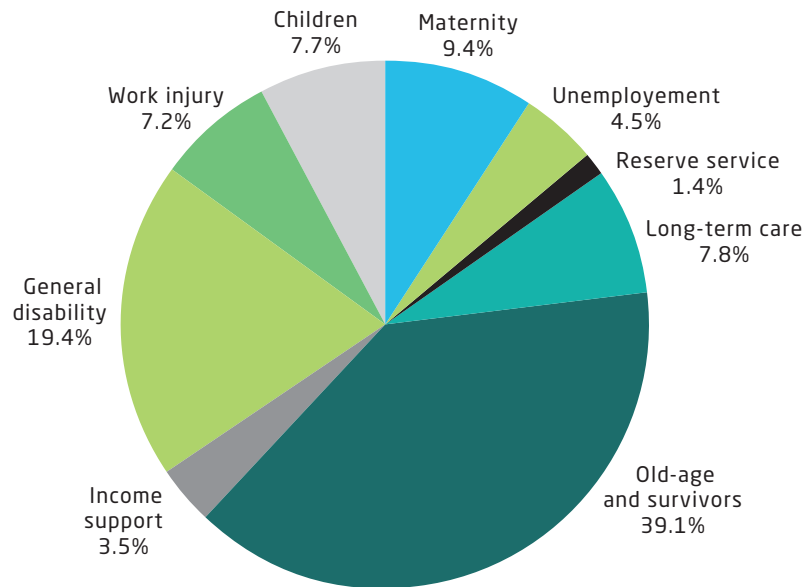


Diagram 3
Receipts of National Insurance Branches by Source of Financing, 2015

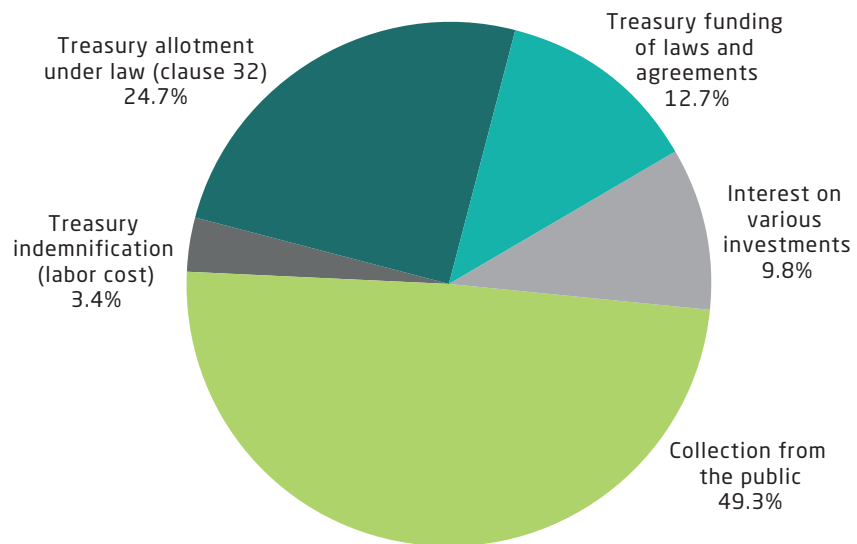


Diagram 4
Benefit Payments as Percentage of GDP, 1980-2015

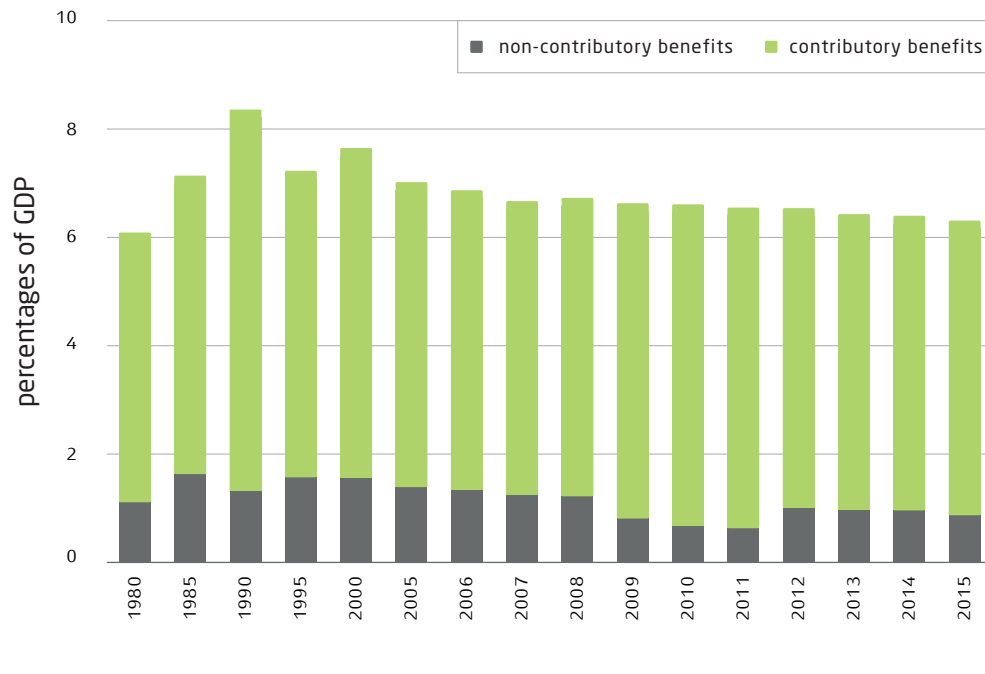


Diagram 5
Collection of Insurance Contributions as Percentage of GDP, 1980-2015

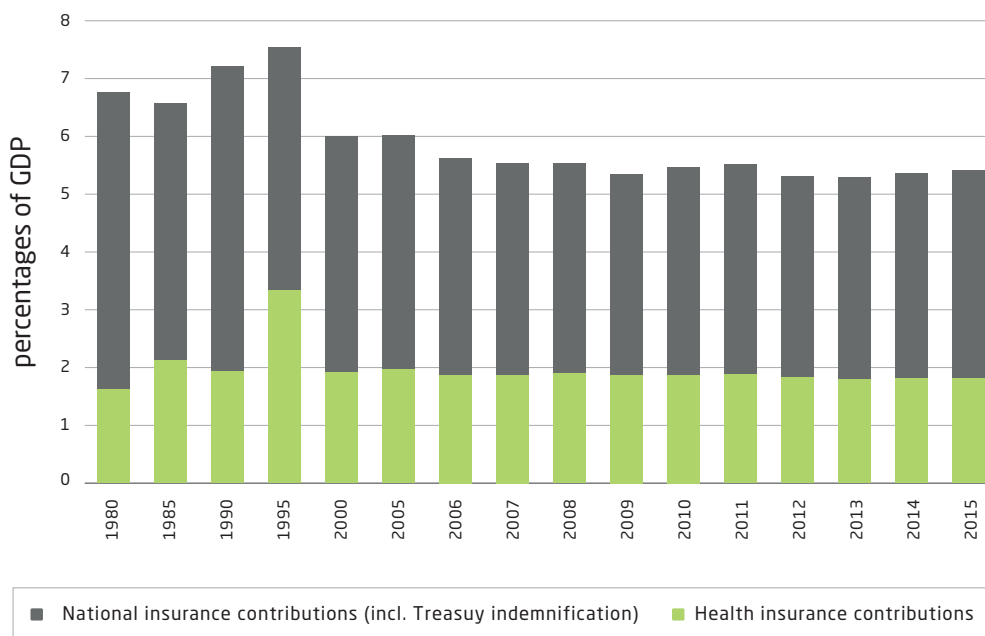


Diagram 6
Public Social Expenditure as Percentage of GDP, OECD Countries and Israel, 2014*

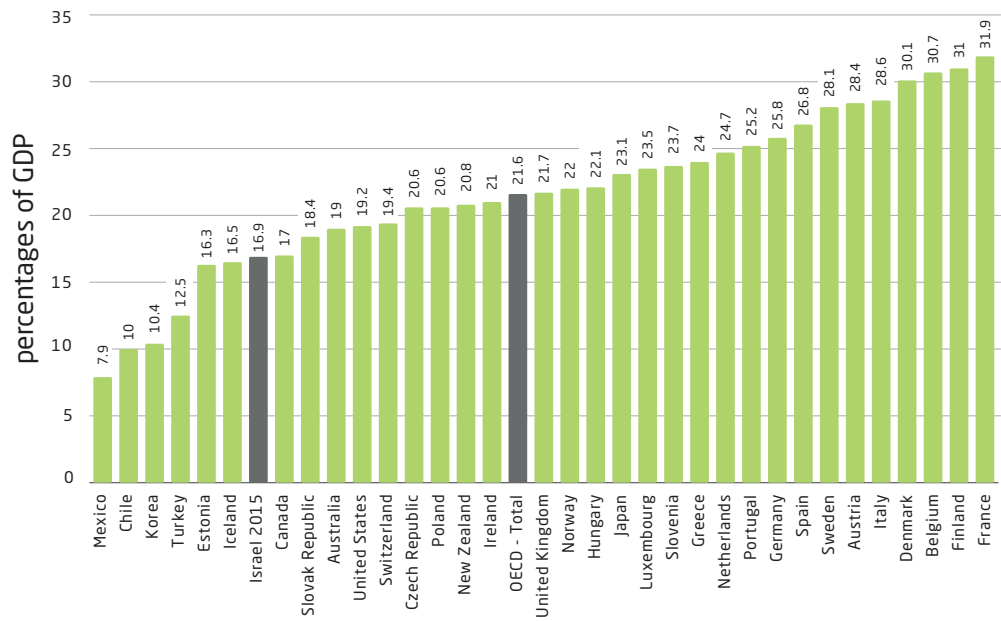


Diagram 7
Public Social Expenditure on Cash Benefits as Percentage of GDP, OECD Countries and Israel, 2014*

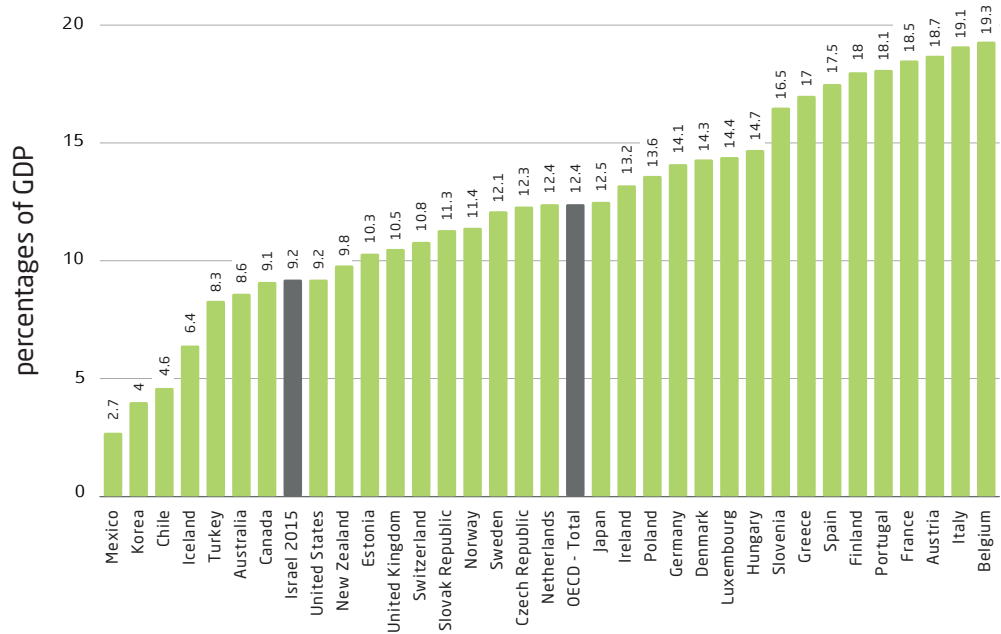


Diagram 8
Public Social Expenditure on in-kind Benefits as Percentage of GDP,
OECD Countries and Israel, 2014*

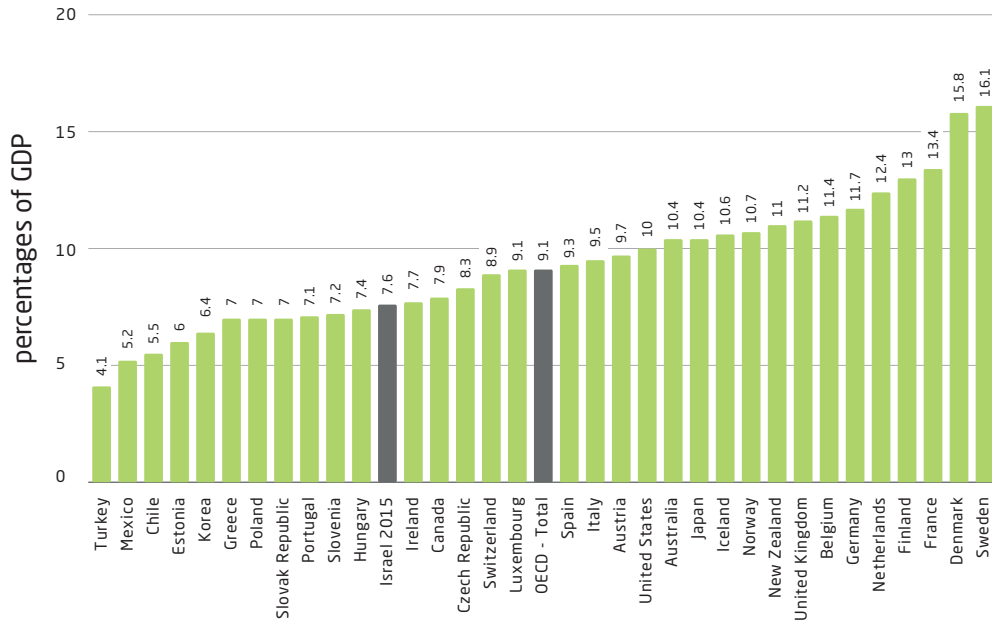


Diagram 9
Rate of Real Cumulative Change in Benefit Payments, 2015 Compared to 2002

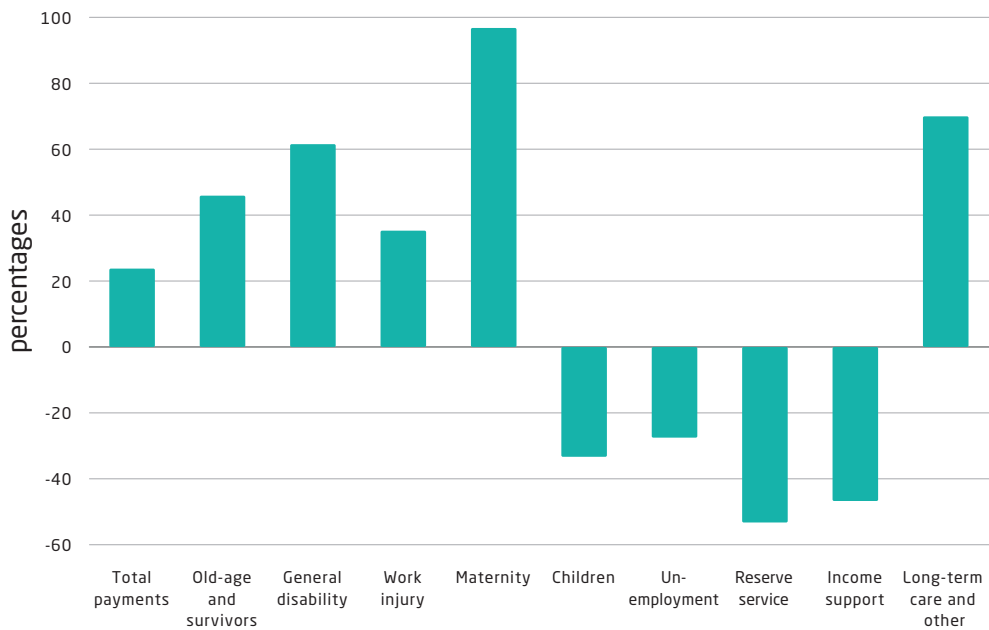


Diagram 10

Rate of Change in Number of Benefit Recipients, by Branch, 2013-2015

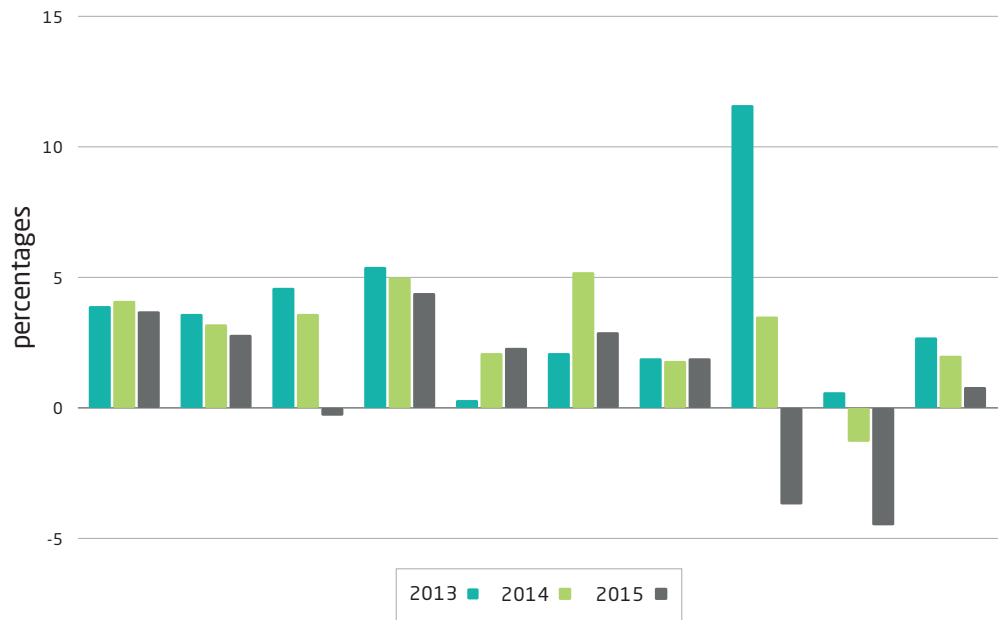


Diagram 11

Unemployment Rate and Rate of Recipients of Unemployment Benefits Over Time, 2001-2015

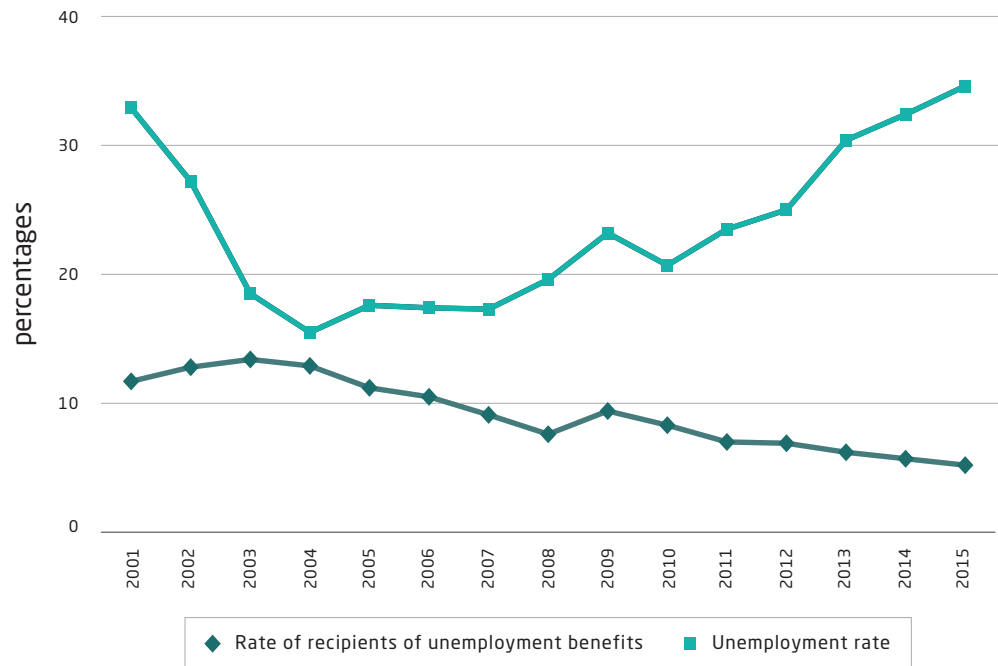


Diagram 12

Poverty in Total Population, Before and After Transfer Payments and Direct Taxes: Families (percentages), 1979-2014 (not including East Jerusalem)

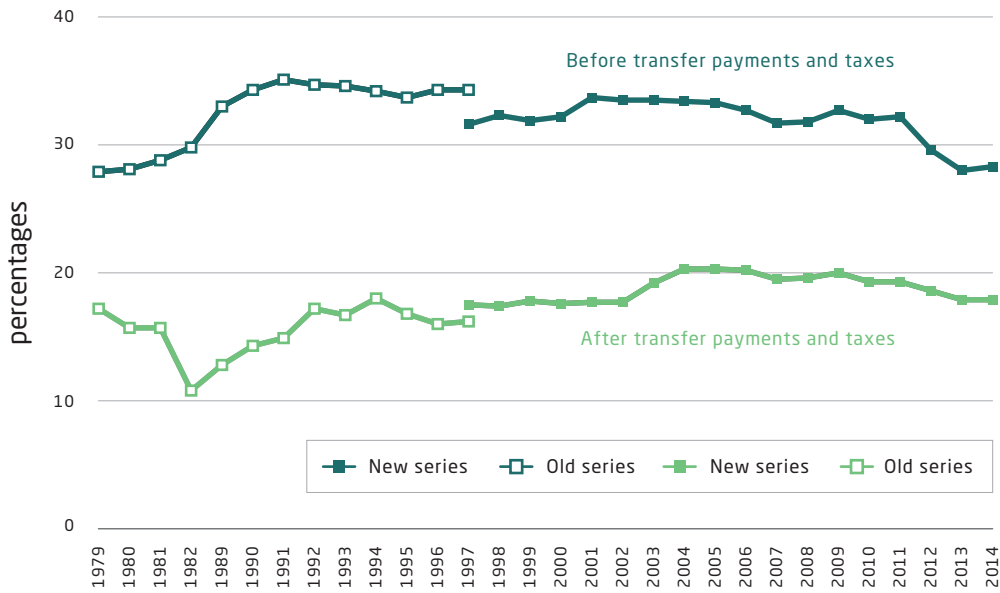


Diagram 13

Poverty Among Children, Before and After Transfer Payments and Taxes (percentages), 1990-2014 (not including East Jerusalem)

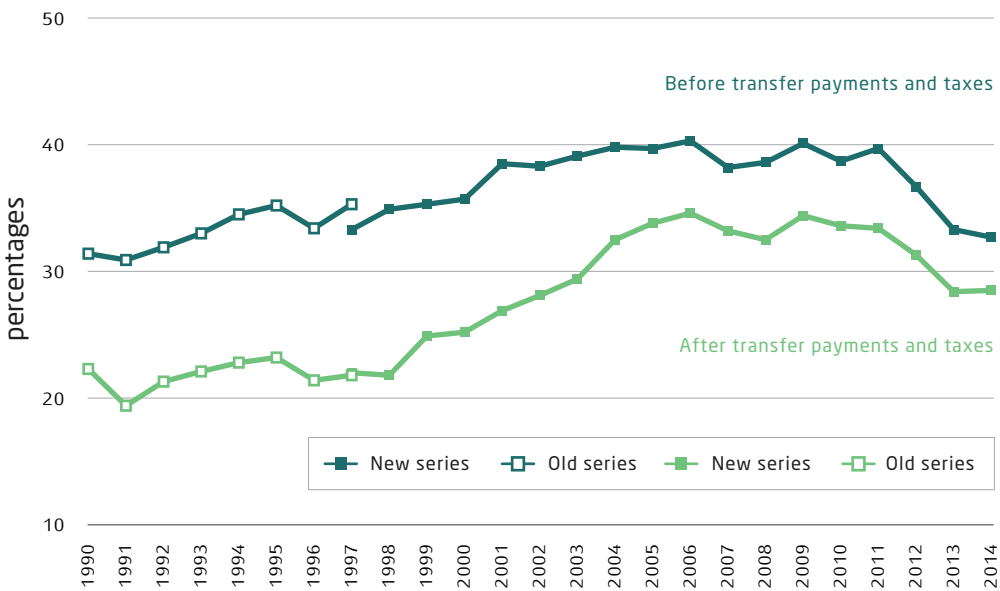
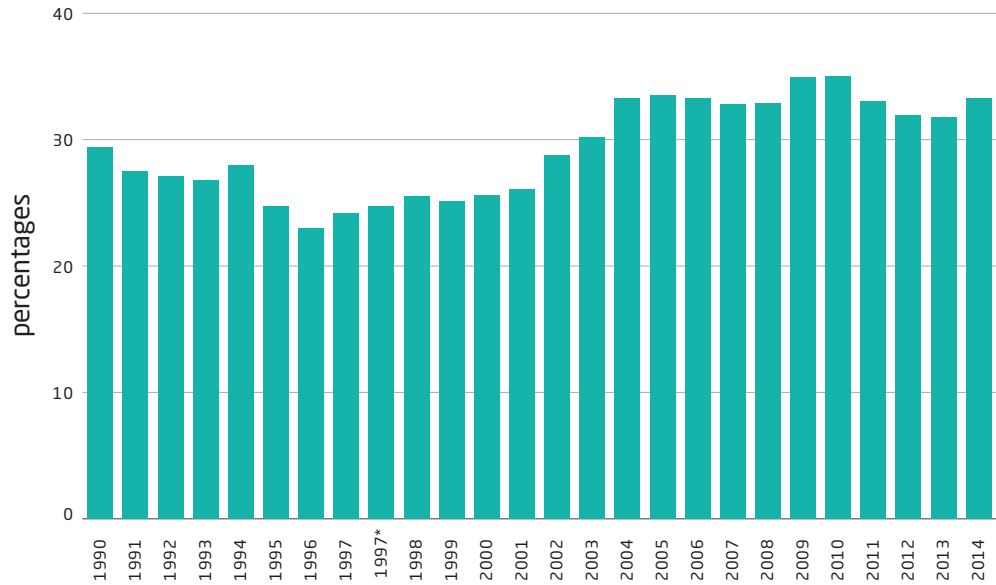


Diagram 14
 Poverty Gap Ratio Index, 1990-2014 (total population, not including East Jerusalem, percentages)



* As of 1997, a new series.

Diagram 15
 The Gini Index for Inequality in Income Distribution Among Families, Before and After Transfer Payments and Taxes, 1979-2014 (not including East Jerusalem)

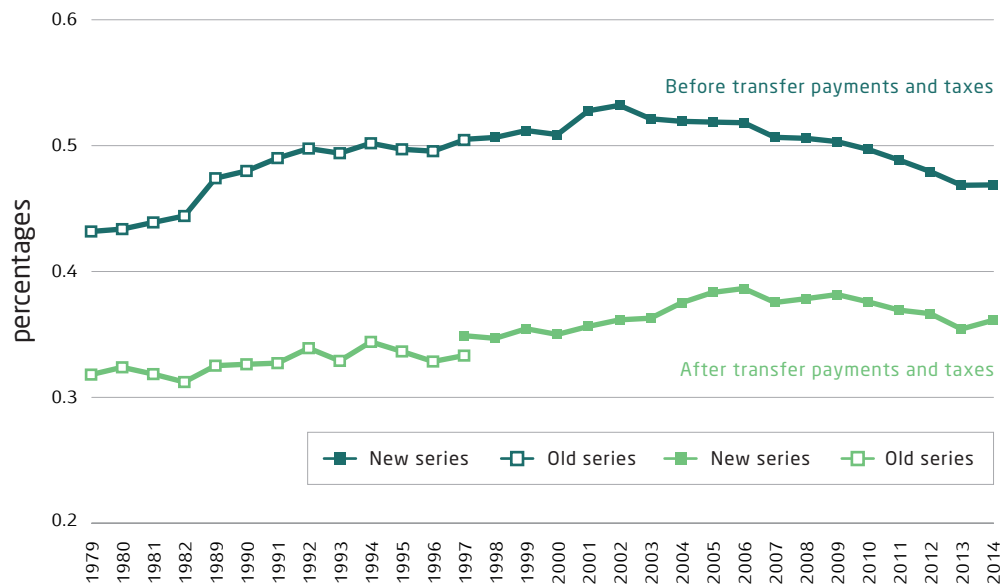


Diagram 16

The Share of Each Decile in Total Transfer Payments and in Total Direct Taxes - Total Population (percentages), 2014

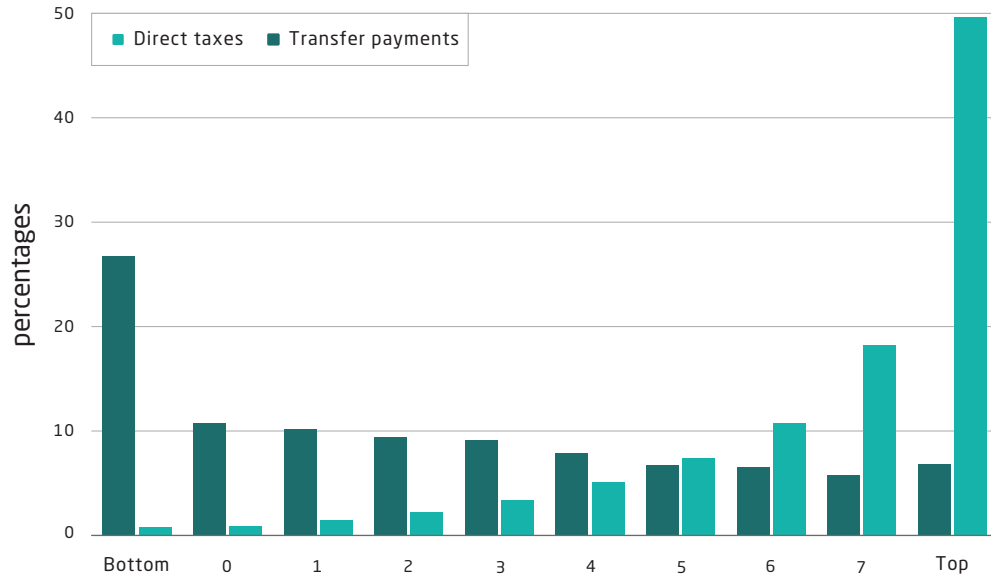
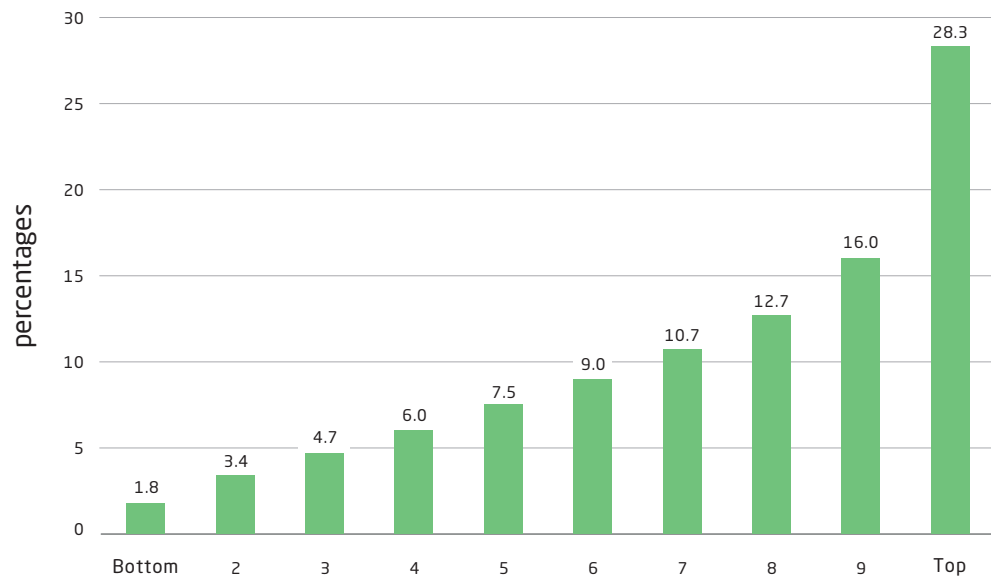


Diagram 17

The Share of Each Decile in Disposable Income (percentages), 2014



* Disposable income is calculated per standard person and each decile represents 10% of all persons.

