
Selected Diagrams

Diagram 1
The National Insurance Institute - Resources and Uses

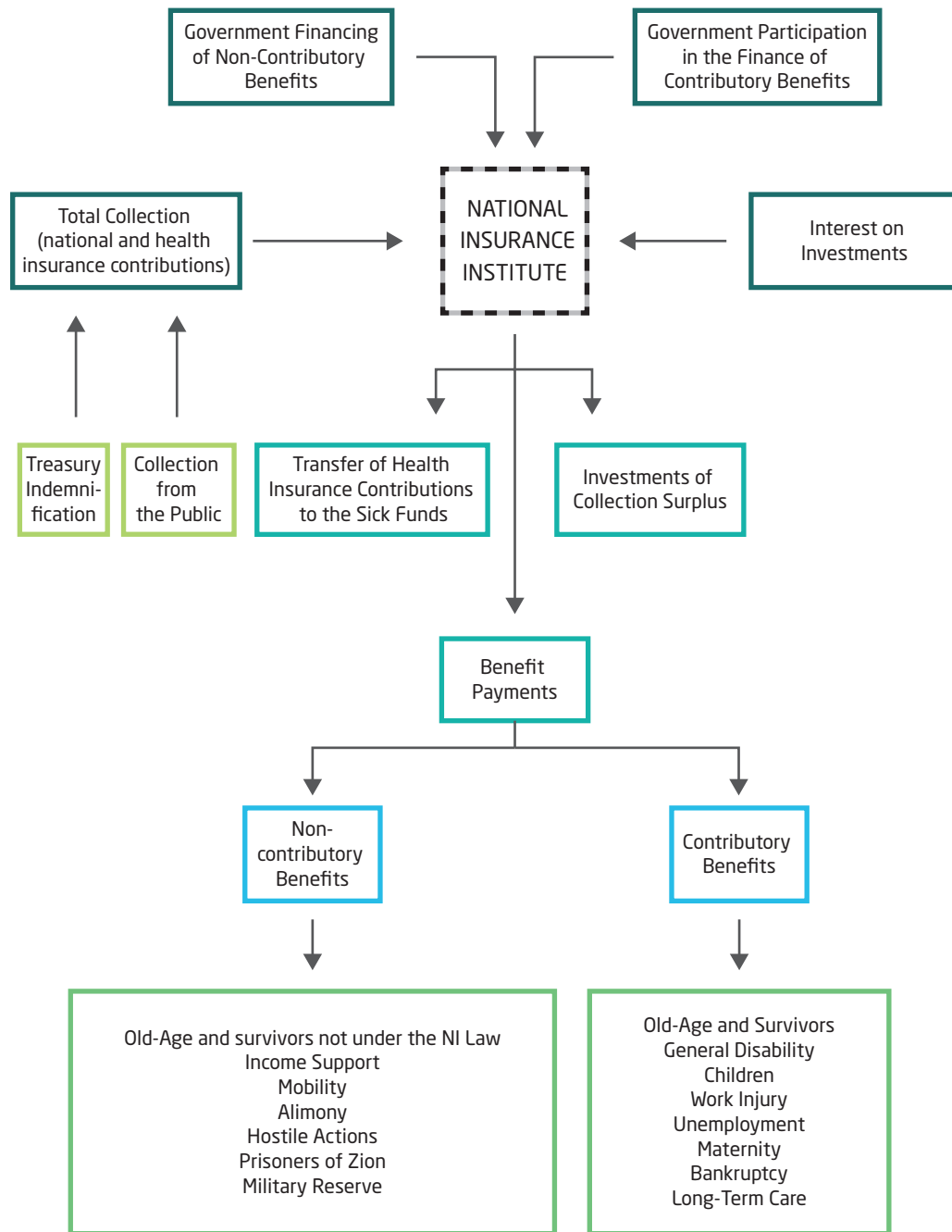


Diagram 2
Benefit Payments by Insurance Branch, 2016

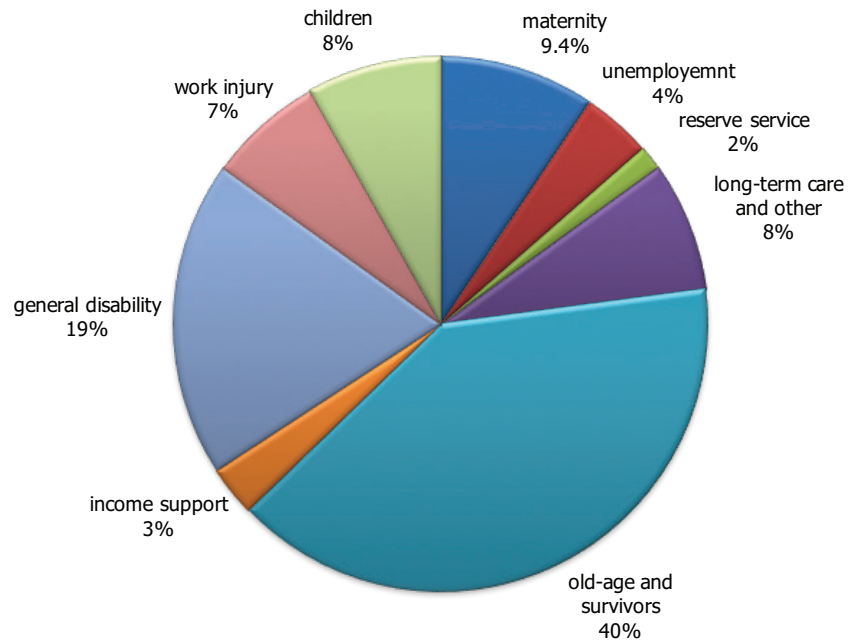


Diagram 3
Receipts of National Insurance Branches by Source of Financing, 2016

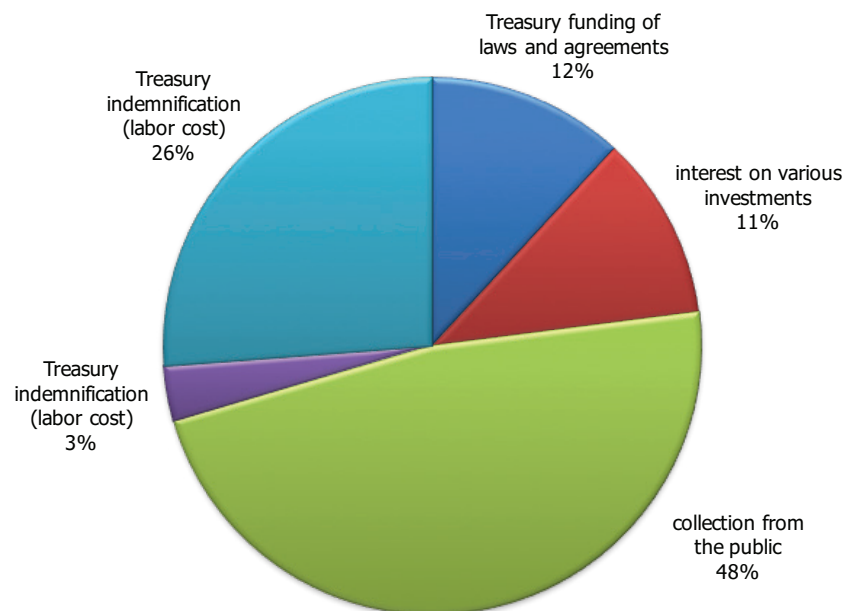


Diagram 4
Benefit Payments as Percentage of GDP, 1980-2016

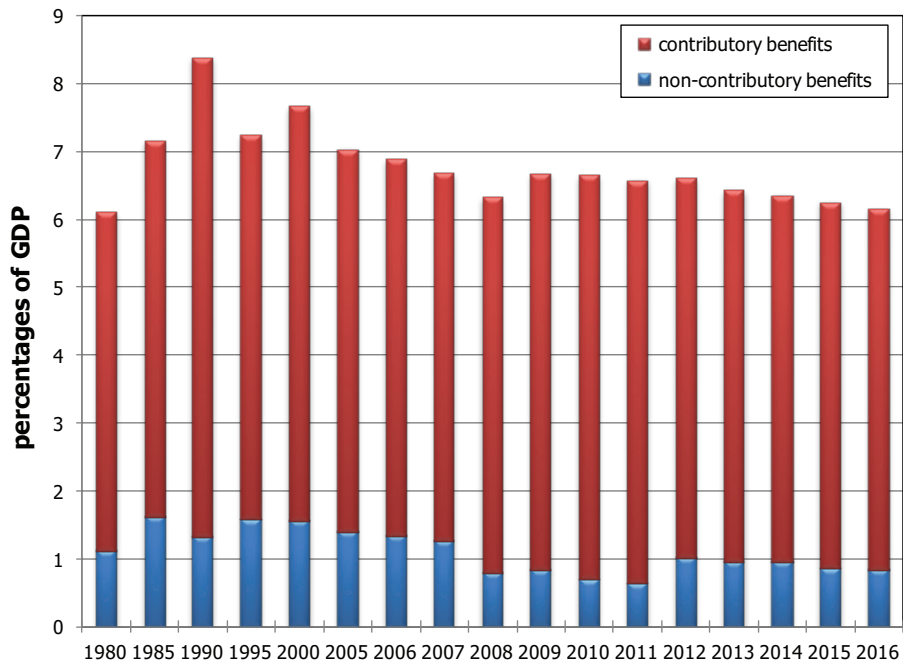


Diagram 5
Collection of Insurance Contributions as Percentage of GDP, 1980-2016

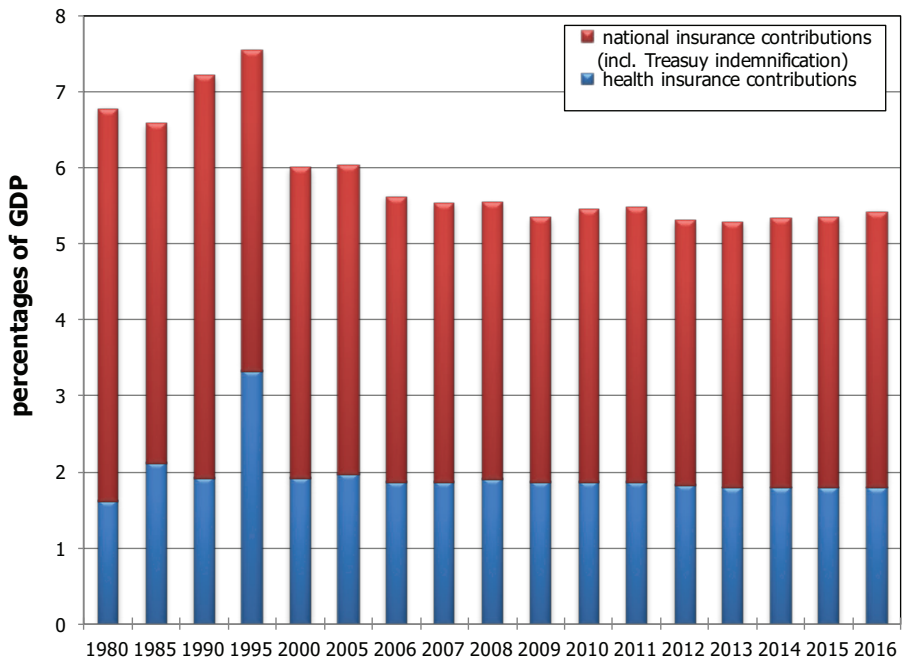
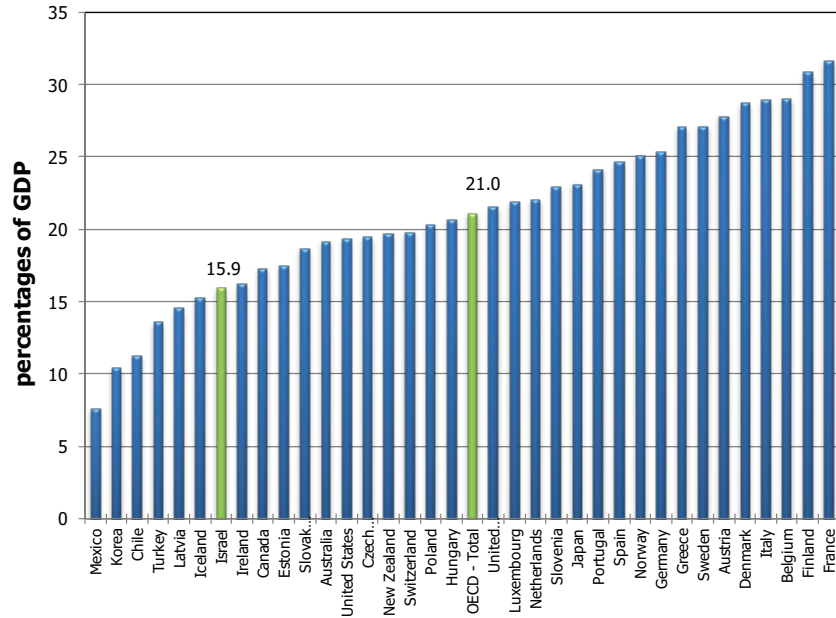
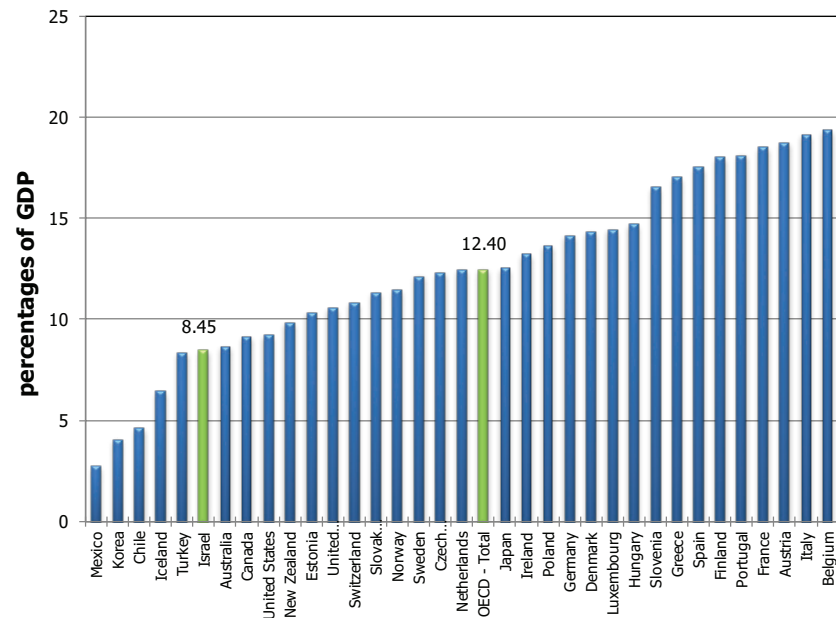


Diagram 6
Public Social Expenditure as Percentage of GDP, OECD Countries and Israel, 2016*



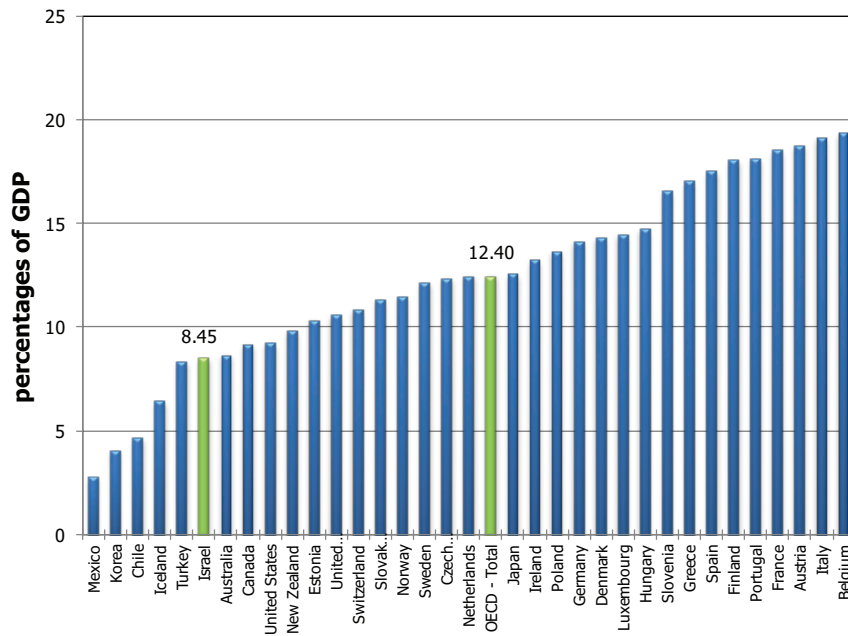
* The source of the international data: OECD; the source of the data for Israel: the National Insurance Institute and the Central Bureau of Statistics

Diagram 7
Public Social Expenditure on Cash Benefits as Percentage of GDP, OECD Countries and Israel, 2016*



* The source of the international data: OECD; the source of the data for Israel: the National Insurance Institute and the Central Bureau of Statistics

Diagram 8
Public Social Expenditure on in-kind Benefits as Percentage of GDP,
OECD Countries and Israel, 2016*



* The source of the international data: OECD; the source of the data for Israel: the National Insurance Institute and the Central Bureau of Statistics

Diagram 9
Rate of Real Cumulative Change in Benefit Payments, 2016 Compared to 2002

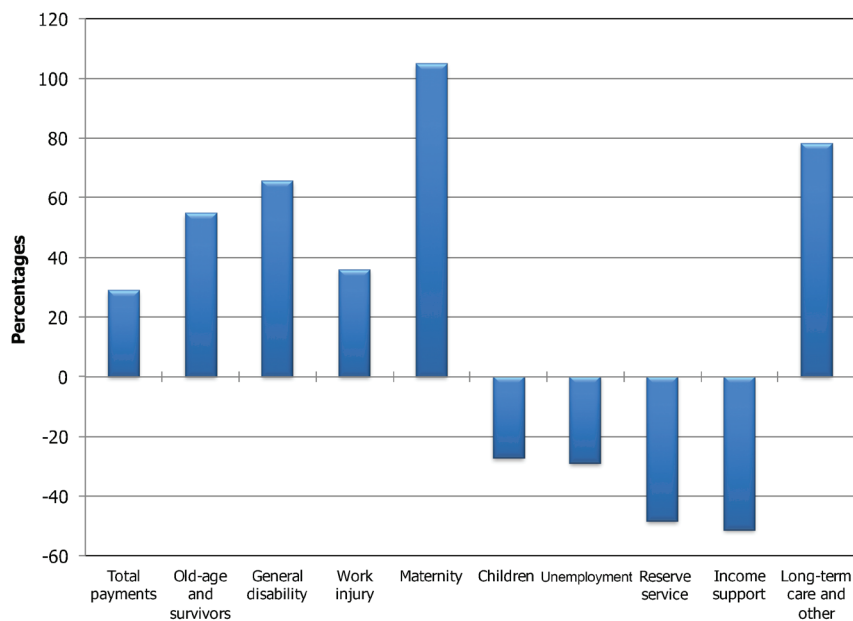


Diagram 10

Rate of Change in Number of Benefit Recipients, by Branch, 2014-2016

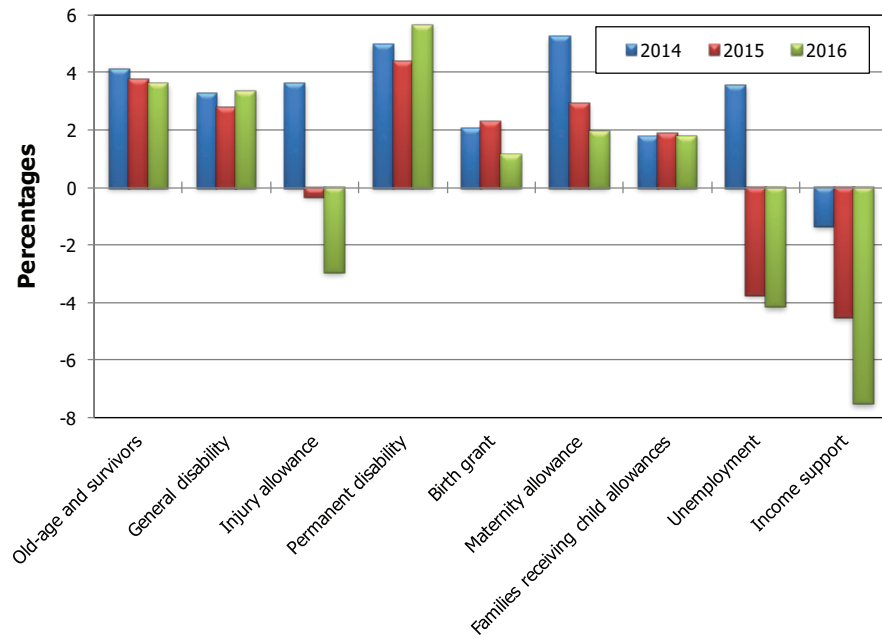


Diagram 11

Unemployment Rate and Rate of Recipients of Unemployment Benefits Over Time, 2001-2016

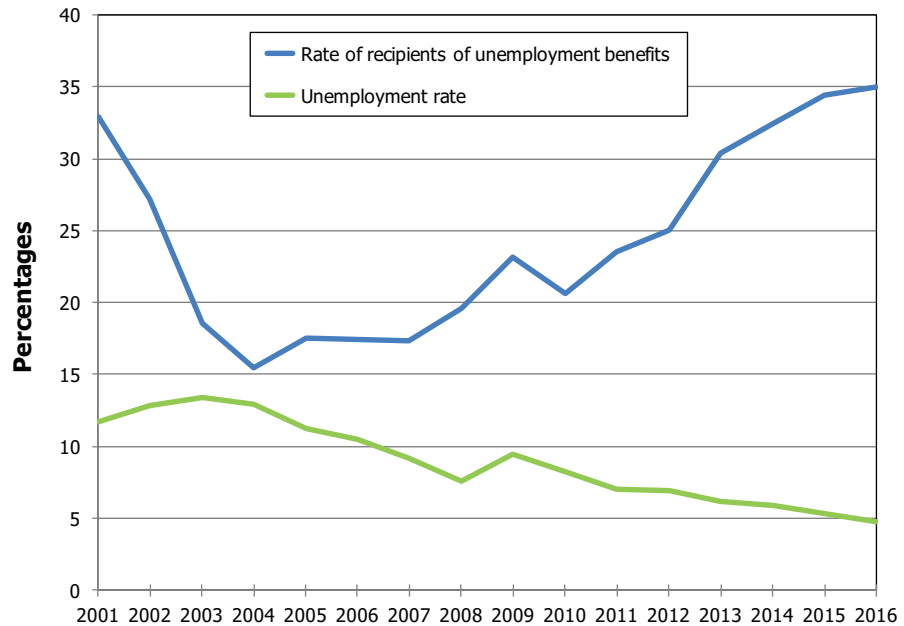


Diagram 12

Poverty in Total Population, Before and After Transfer Payments and Direct Taxes: Families (percentages), 1979-2015 (not including East Jerusalem)

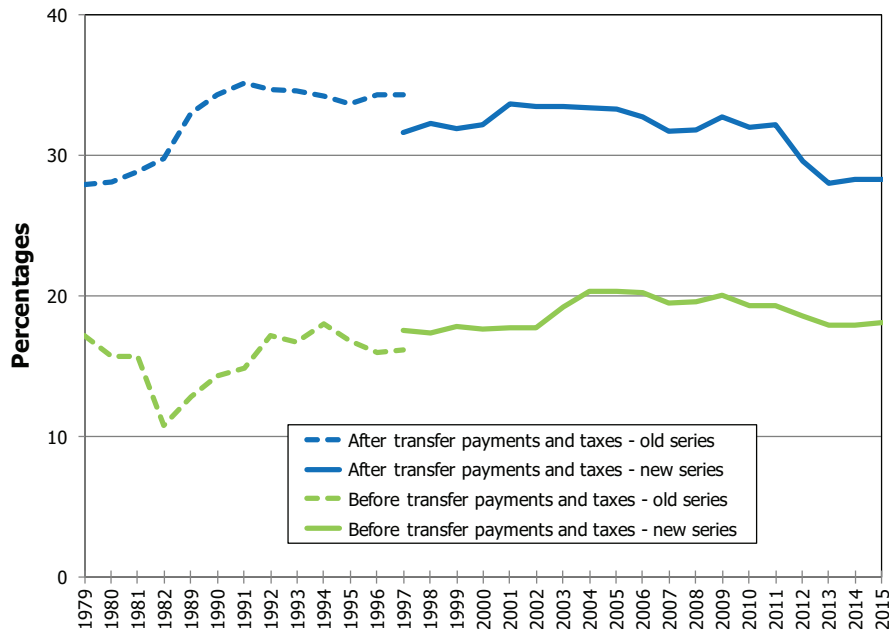


Diagram 13

Poverty Among Children, Before and After Transfer Payments and Taxes (percentages), 1990-2015 (not including East Jerusalem)

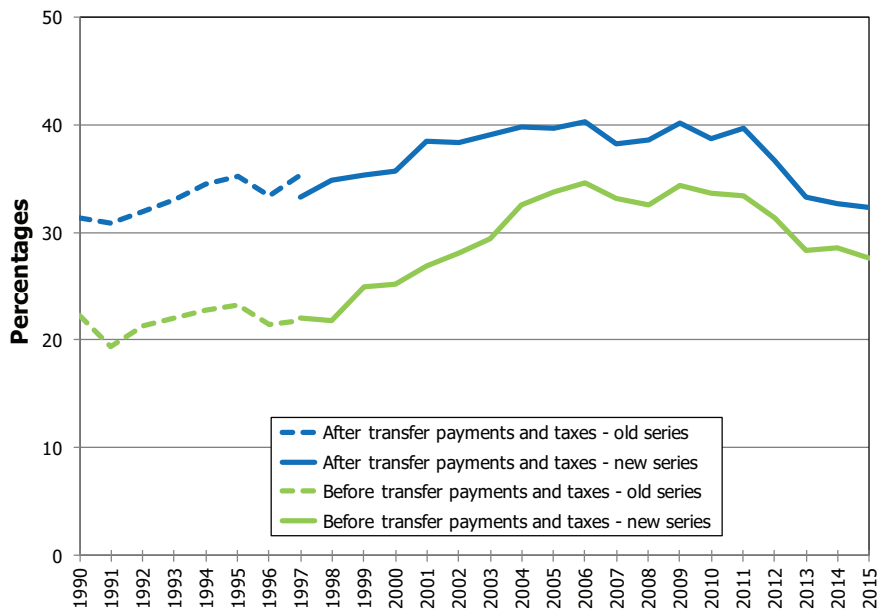


Diagram 14
 Poverty Gap Ratio Index, 1990-2015 (total population, not including East Jerusalem, percentages)

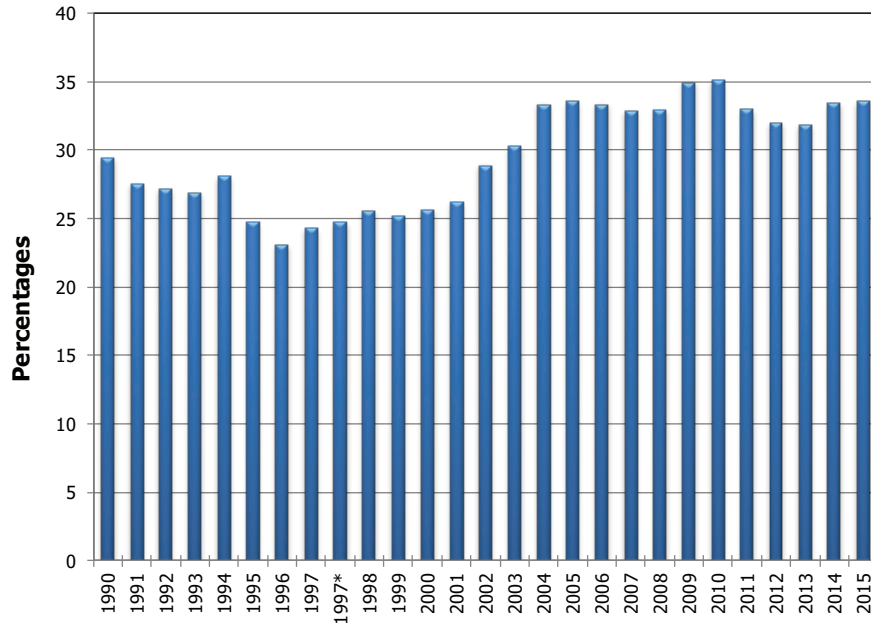


Diagram 15
 The Gini Index for Inequality in Income Distribution Among Families, Before and After Transfer Payments and Taxes, 1979-2015 (not including East Jerusalem)

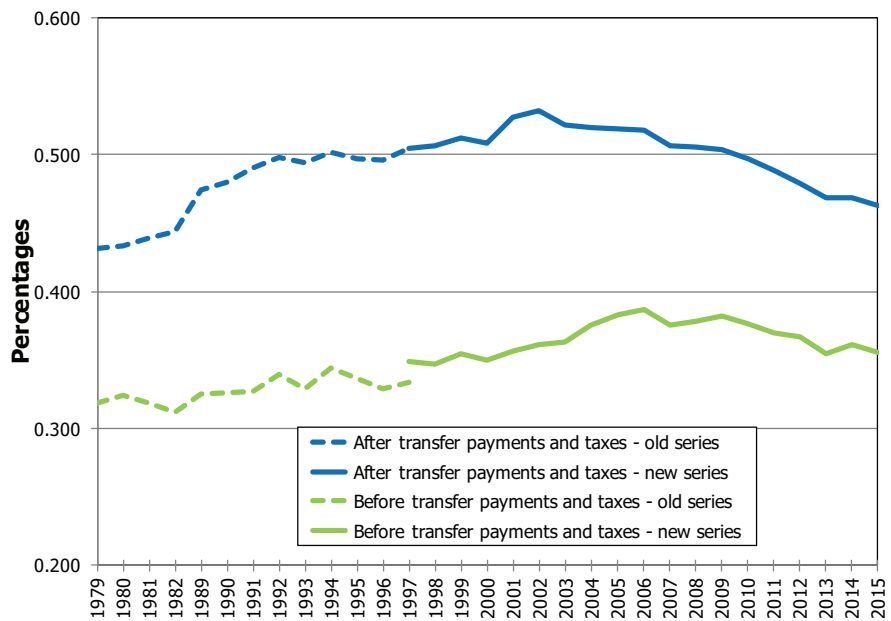


Diagram 16

The Share of Each Decile in Total Transfer Payments and in Total Direct Taxes - Total Population (percentages), 2015

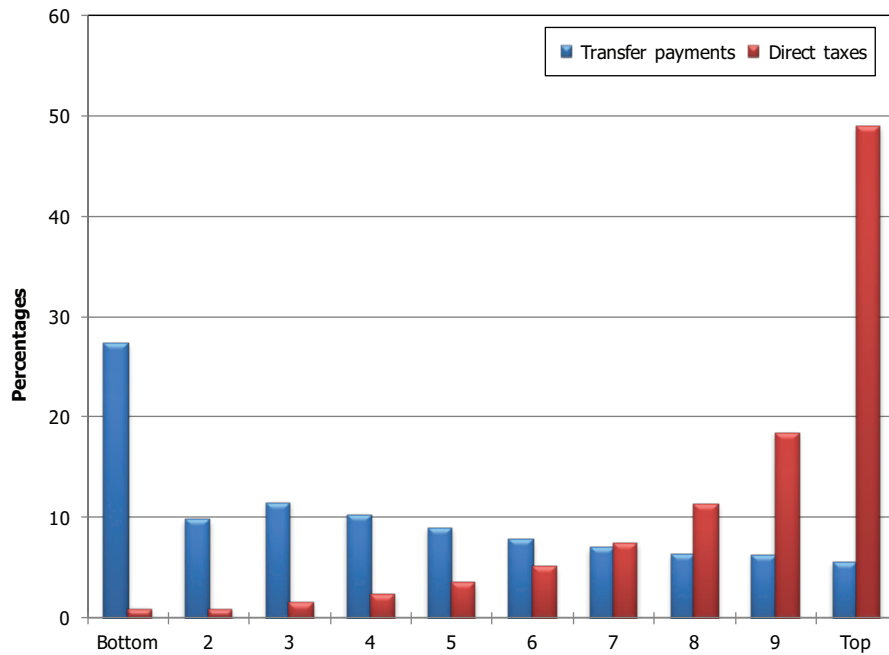


Diagram 17

The Share of Each Decile in Disposable Income (percentages), 2015

